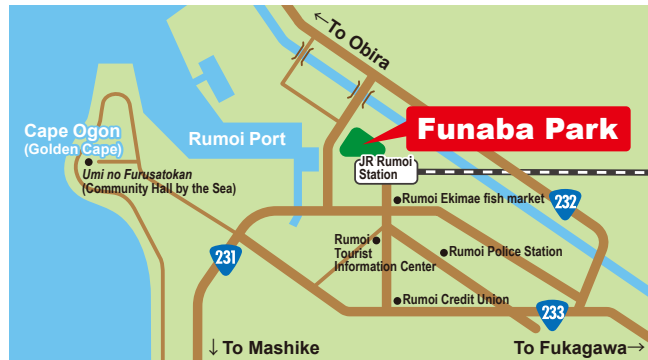


# Funaba Park

## Information and Guidelines

Funaba Park Designated Manager FM Moeru Co.Ltd.



## Funaba Park

〒077-0005 Rumoi City Funaba cho 2 chome 114

**TEL 0164-43-1501** **FAX 0164-56-4410**

MAIL funaba@moeru.fm

HP <http://funaba.info>

FaceBook <https://www.facebook.com/funabaramoi>

Open / Close May and September / 9:00-18:00  
from June thru August / 9:00-19:00  
from October thru April / 9:00-17:00

\*Administrative building hours are adjusted on clear days  
to accommodate those who wish to view the sunset.



## Funaba Park Outdoor Facilities

### Dog Run

Dog lovers welcome! Frisbee rental (free of charge)

### Park Golf Course

Equipment rental available (free of charge)

### Green Sward (Lawn Field)

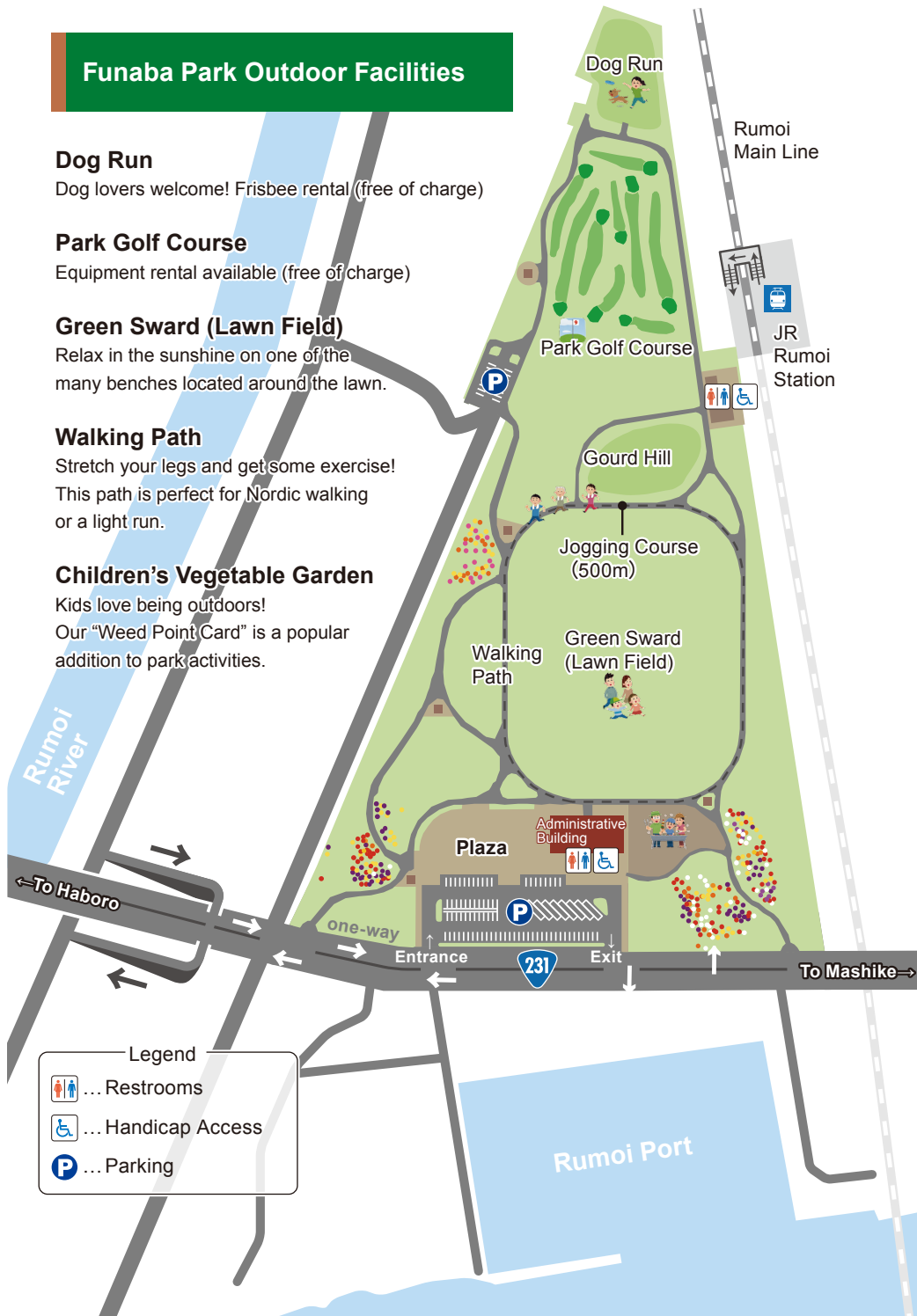
Relax in the sunshine on one of the many benches located around the lawn.

### Walking Path

Stretch your legs and get some exercise! This path is perfect for Nordic walking or a light run.

### Children's Vegetable Garden

Kids love being outdoors! Our "Weed Point Card" is a popular addition to park activities.



## Administrative Building Usage Tips

### Experiential Learning Room 1.

This space is optimal for hosting, meetings and other group activities. Please ask our friendly staff about reservation guidelines.

### Experiential Learning Room 2.

This fully equipped kitchen for cooking classes is available by reservation. Cooking lessons in English are also regularly scheduled.

### Second Floor Observatory Landing

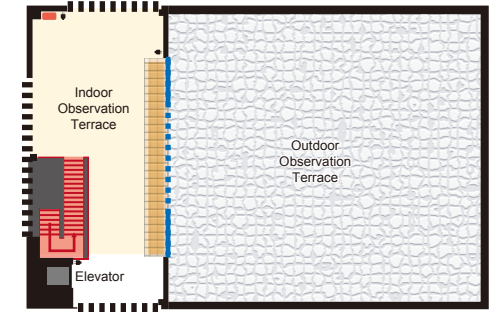
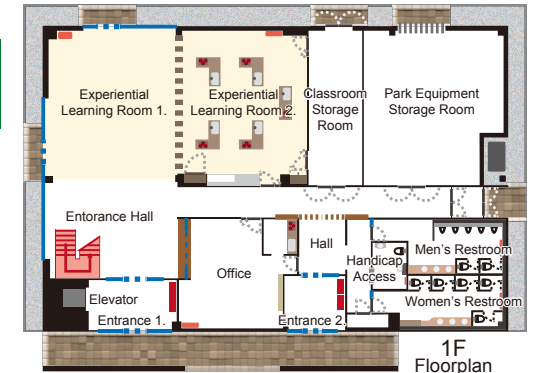
Sit and watch the sun setting beyond the harbor or gaze at the mountains nearby. This is a great spot to enjoy the changing seasons.

### 24 Hour Restrooms

We keep our restrooms clean! A barrier free restroom is available for wheelchair access.

### Elevator

Our facility is barrier free. Please use the elevator for access to the 2nd floor.



Experiential Learning Room 1. (1F)



Experiential Learning Room 2. (1F)



Indoor Observation Terrace (2F)

## Funaba Park Usage Fees and Rental Guide

These areas are available for rental.

|                          |                                  |   |
|--------------------------|----------------------------------|---|
| Green Sward (Lawn Field) | Full Field Rental 1 hour         | 800 yen / high school and under 400 yen                 |
|                          | Half Field Rental 1 hour         | 400 yen / high school and under 200 yen                 |
| Administrative Building  | Experiential Learning Room 1     | 1 hour 500 yen  |
|                          | Experiential Learning Room 2     | 1 hour 500 yen<br>Utility costs 250 yen per reservation |
|                          | Second Floor Observatory Landing | 1 hour 500 yen  |