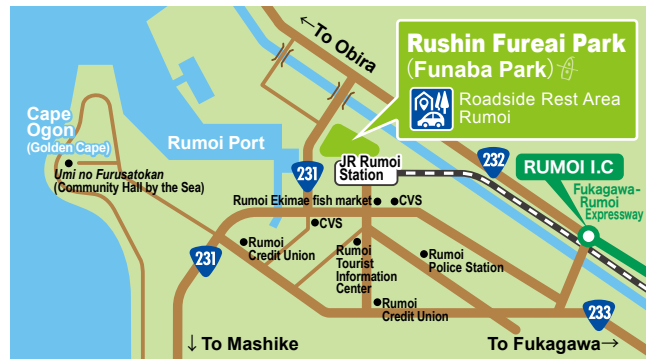


Rushin Fureai Park

(Funaba Park)

Information and Guidelines



Rushin Fureai Park

(Funaba Park)

〒077-0005 Rumoi City Funaba cho 2 chome 114

TEL 0164-43-1501 **FAX 0164-56-4410**

MAIL funaba@moeru.fm

HP <https://funaba.info>

FaceBook <https://www.facebook.com/funabarumoi>

Open / Close May and September / 9:00-18:00
from June thru August / 9:00-19:00
from October thru April / 9:00-17:00



Funaba Park Designated Manager FM Moeru Co.Ltd.

Rushin Fureai Park Outdoor Facilities

Dog Run

Dog lovers welcome! Frisbee rental (free of charge)

Park Golf Course

Equipment rental available (free of charge)

Green Sward (Lawn Field)

Relax in the sunshine on one of the many benches located around the lawn.

Walking Path

Stretch your legs and get some exercise! This path is perfect for Nordic walking or a light run.

Children's Vegetable Garden

Kids love being outdoors! Our "Weed Point Card" is a popular addition to park activities.



Legend

- ... Restrooms
- ... Handicap Access
- ... Parking
- ... Carport

Administrative Building Usage Tips

Experiential Learning Room 1.

This space is optimal for hosting, meetings and other group activities. Please ask our friendly staff about reservation guidelines.

Experiential Learning Room 2.

This fully equipped kitchen for cooking classes is available by reservation. Cooking lessons in English are also regularly scheduled.

Second Floor Observatory Landing

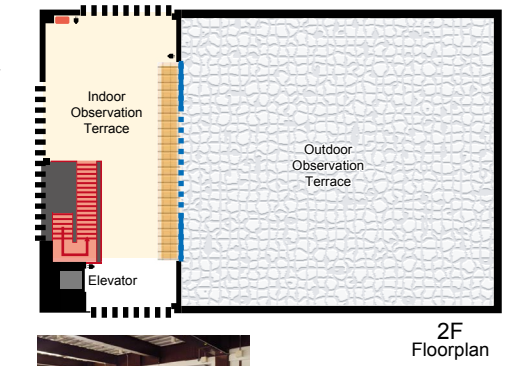
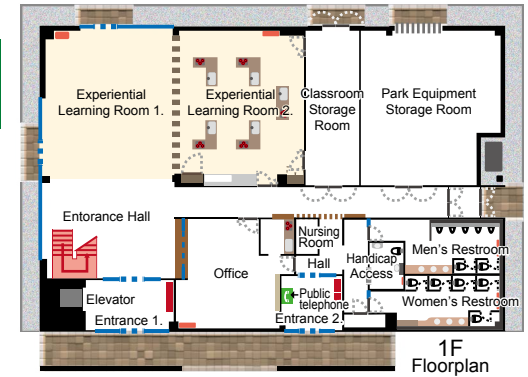
Sit and watch the sun setting beyond the harbor or gaze at the mountains nearby. This is a great spot to enjoy the changing seasons.

24 Hour Restrooms

We keep our restrooms clean! A barrier free restroom is available for wheelchair access.

Elevator

Our facility is barrier free. Please use the elevator for access to the 2nd floor.



Experiential Learning Room 1. (1F)



Experiential Learning Room 2. (1F)



Indoor Observation Terrace (2F)

Rushin Fureai Park Usage Fees and Rental Guide

These areas are available for rental.

Green Sward (Lawn Field)	Full Field Rental 1 hour	820 yen / high school and under 410 yen
	Half Field Rental 1 hour	410 yen / high school and under 210 yen
Administrative Building	Experiential Learning Room 1	1 hour 510 yen
	Experiential Learning Room 2	1 hour 510 yen Utility costs 260 yen per reservation
	Second Floor Observatory Landing	1 hour 510 yen